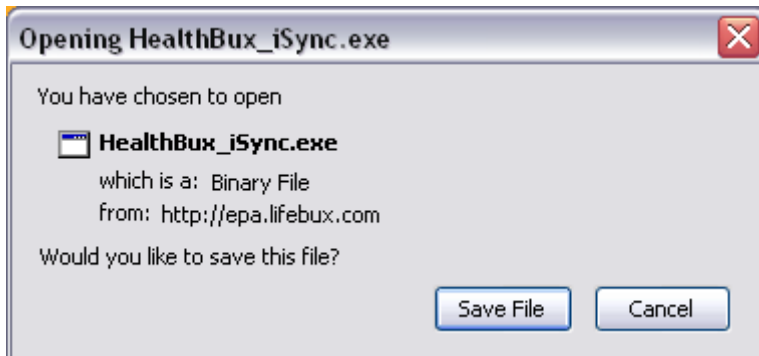


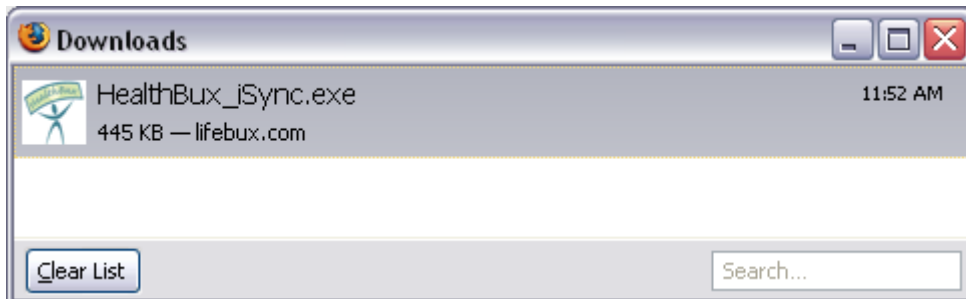


## Fifefox Installation Instructions

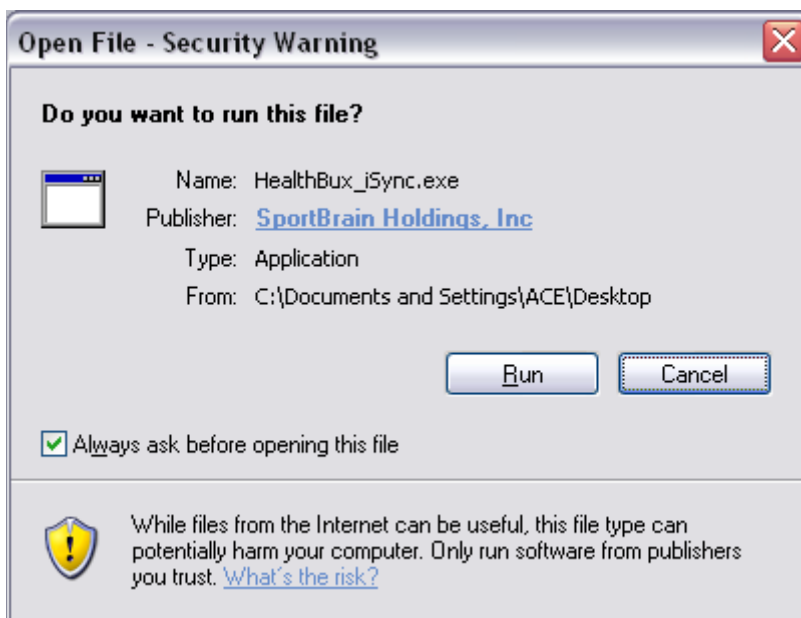
1. Click the "Click here to download HealthBux iSync software".
2. Click the "Save File":



3. Double-click on the grey bar to install iSync:



4. Click "Run":



4. Verify the small green/white icon is visible near the clock (bottom right corner of the screen):



5. Close all Firefox windows (the browser window and the window shown in Step 3).
6. Plug in your pedometer to the USB cable (and plug the USB cable into your computer).
7. At the login box, type in your User Name and Password (password is cAsE sensitive).

Questions or Problems? Please send an email to [Support@Lifebux.com](mailto:Support@Lifebux.com).

Thank you!